

CamNtech Ltd provides regular software updates to its customers to keep them up to date with the latest software features and, occasionally, bug fixes.

The downloads can be found at any time on our website (<http://www.camntech.com>) in the 'Software Downloads' section of the website.

This page will prompt you for a username and password (which should have been supplied to you at the time of your order) and to select the type of software you are trying to download. Please be aware that you will need a different password for each software type you wish to download, if you have lost your details please contact admin@camntech.com.

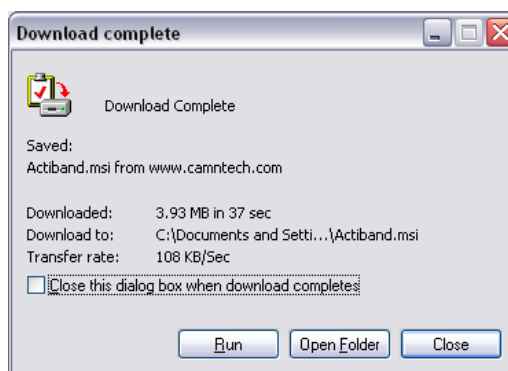
Please be aware that, following Microsoft's decision to cease supporting its Windows 98 and earlier operating systems, CamNtech Ltd is no longer able to offer full support for customers using these systems. We cannot guarantee that our software will install and operate properly on these systems. Users wishing to try but unable to run an .msi file may contact us directly to get a different installer file (though we cannot guarantee that even with this the software will install and run correctly).

The new version of SW is contained in a Microsoft Installer (.msi) file. Proceed as follows:

- 1 Click on the link to download the file and the following window will appear:



- 2 Click 'Save' to download the file on your folder somewhere where you will easily be able to find it again (we would recommend onto the Desktop). **THERE IS NO NEED TO SAVE IT DIRECTLY INTO THE PROGRAM FILE FOLDER.**
- 3 Once it is saved you will be asked if you wish to open it. The screen in Internet Explorer looks like this:



- 4 If you wish to install the update now click "Run". (If you wish to run the installer later or copy the file onto another computer click "Close" and run the file by double clicking it later.)
- 5 The update installer will now load and should guide you through the installation process.
- 6 Once the installation is complete you are free to delete the downloaded .msi file.

In case of problems please contact us on admin@camntech.co.uk